

## ANSI C136.41 Dimming Receptacle

TE Connectivity launches the new ANSI C136.41 compliant dimming receptacle and spring leaf contacts which provide an electrical and mechanical interconnection between an ANSI C136.41-2013 photo control cell and luminaire. Ideal for outdoor commercial and utility lighting the ANSI C136.41 compliant dimming receptacle is available with two or four dimming contacts to support either 0-10 VDC dimming methods or Digital Addressable Lighting Interface (DALI), while providing a reliable power interconnect with three robust twist lock contacts.

### KEY FEATURES

- Accepts ANSI standard dimmable photocells to provide a connection between the photocell and the luminaire
- Available with two or four dimming contacts to support one or two channel dimming protocols
- Robust twist lock contacts for a reliable power interconnect
- Receptacle comes pre-terminated with wire leads for ease of integration into new or existing light fixtures
- Available with 105° and 150° C rated wire insulation for varying temperature rated luminaires

### APPLICATIONS

- Street and Roadway Lighting
- Photo controls
- Parking Lot Lighting

### MECHANICAL

- Conforms to dimensional requirements of ANSI C136.41-2013
- Offer a 5 and 7 position version
  - 5 position: 3 power contacts + 2 dimming/signal contacts
  - 7 position: 3 power contacts + 4 dimming/signal contacts
- Power contacts terminated to 14AWG stranded wire per UL1015 or UL3321
- Signal Contacts terminated to 18AWG stranded wire per UL1015 or UL3321

### ELECTRICAL

	<a href="#">Power contacts</a>	<a href="#">Dimming contacts</a>
• Current rating:	15 A max	0.10 A max
• Voltage rating:	480 VAC/DC	10 VAC/DC
• cUR recognized to UL 773		

### MATERIALS

- Power contacts: Copper Alloy, tin over nickel plating
- Dimming contacts: Copper Alloy, gold over nickel plating
- Housing: Glass filled PBT, UL 94V-0 flammability rated

### PRODUCT OFFERING

	<a href="#">with 150° C wires</a>	<a href="#">with 105°C wires</a>
5 position (2 dimming / signal):	<b>2213362-1</b>	<b>2213362-3</b>
7 position (4 dimming / signal):	<b>2213362-2</b>	<b>2213362-4</b>

Spring Leaf Brush Contact:	<b>2213365-1</b>
----------------------------	------------------

### APPLICATIONS AND SPECIFICATIONS

- Application Specification #: **114-32115**
- Product Specification #: **108-32059**

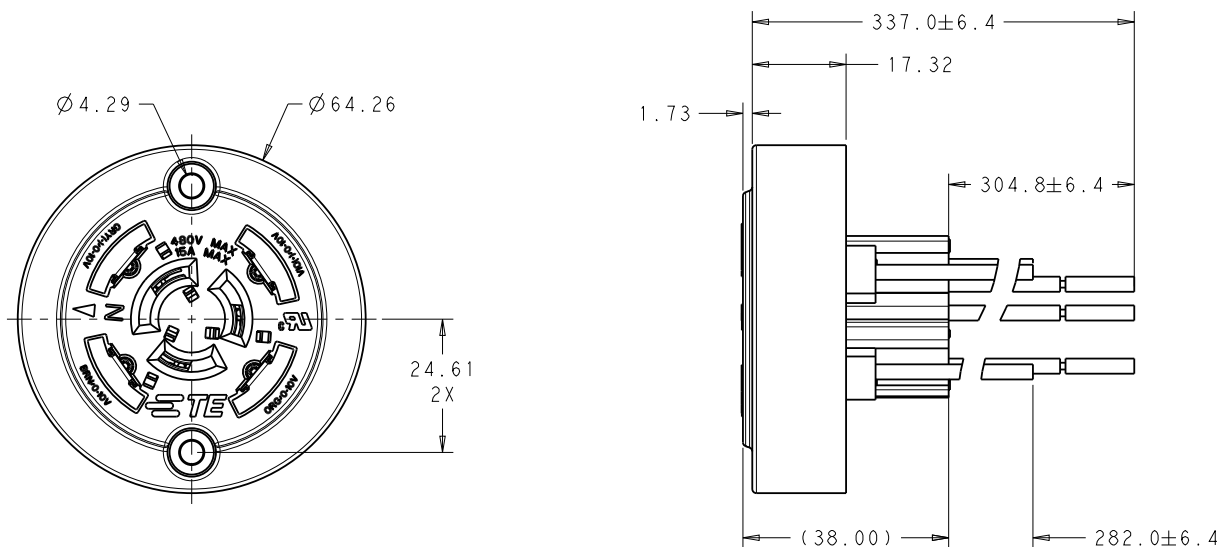


Spring leaf brush contact as shipped (left) and formed for insertion



INTELLIGENT BUILDINGS

PRODUCT DIMENSIONS



Dimensions are shown for reference purposes only. Specifications subject to change.  
Customer drawing should be used for all design activity.



INTELLIGENT BUILDINGS