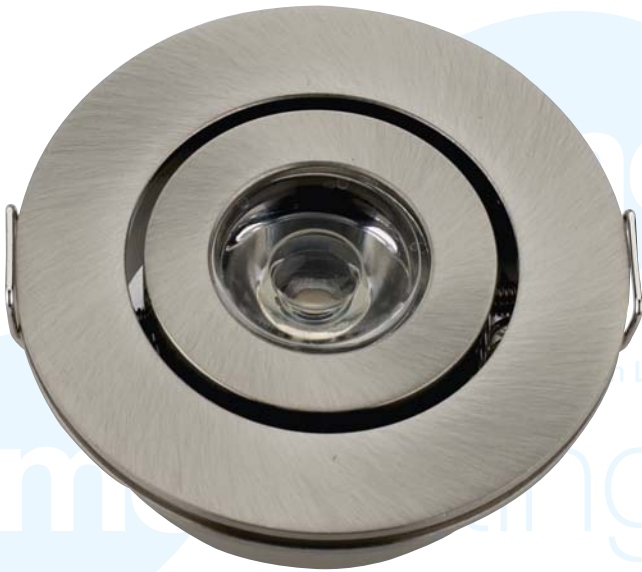


LED DownLites

- High and Low Power LED Downlights
- Energy efficient
- Reduction in heat
- Comprehensive range
- Fixed and Adjustable
- Choice of Warm White or Pure White beam colour
- Long life - up to 30,000 hours
- Variety of styles



LED21

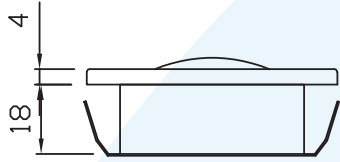
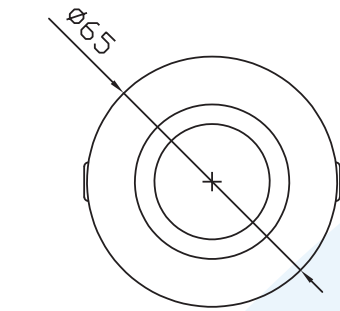


LED01A



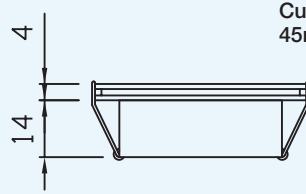
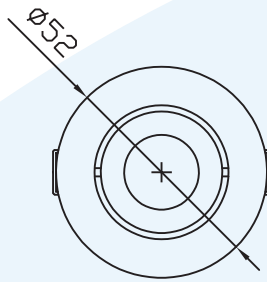
LED3S

LED DownLites



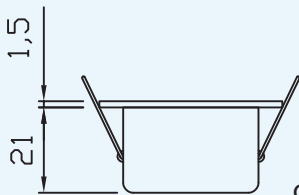
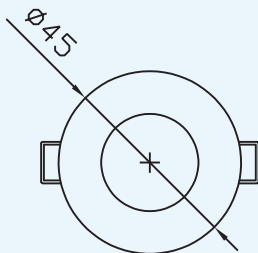
Cut out size
57mm approx

LED21
& 21XL



Cut out size
45mm approx

LED01A



ALL DIMENSIONS IN MM (APPROX)

Cut out size
38mm approx

LED 3S

- Eclairages LED d'ambiance
- Eclairages LED à faible et faible puissance
- Economes en énergie
- Chaleur dégagée réduite
- Fixes et réglables
- Possibilité d'éclairage en blanc chaud ou blanc pur
- Durée de vie longue jusque 30 000 heures
- Déclinaison de styles

- Unterschiedlich starke LED Downlights
- Energiesparend
- Geringe Wärmeentwicklung
- Umfassende Produktreihe
- Fest und verstellbar
- Wahl zwischen Warmweiß, und Purweiß
- Langlebig - bis zu 30.000 Stunden
- Vielseitige Ausführungen

- Vari stili
- Maggiore durata – più di 30.000 ore di luce
- Possibilità di scelta tra bianco caldo e bianco freddo puro
- Fissabile e regolabile
- Gamma globale
- Riduzione di emissioni di calore
- Risparmio energetico
- LED e LED di potenza incassati

| | Lamp Colour | Finish | Bulk | Retail |
|---------|-------------|-----------------|-------|--------|
| LED21L | Warm White | Brushed Nickel | F2506 | F2485 |
| | Pure White | Brushed Nickel | F2509 | F2486 |
| LED21XL | Warm White | Brushed Nickel | F2539 | F2540 |
| LED03S | Warm White | Polished Chrome | F2518 | F2519 |
| LED01A | Warm White | Brushed Nickel | F2447 | F2448 |

Please see our website for range updates.

| | LED21L (PW) | LED21L (WW) | LED21XL | LED03S | LED01A |
|---------------------|-------------|-------------|---------|---------|-----------|
| Running Voltage | 9-15V | | | | |
| Nominal Consumption | 2W | | | 0.6W | 1.5W |
| Colour Temperature | 6000K | 3000K | | | |
| Lamp Output | 55-60lm | 50-55lm | 55-60lm | 20-30lm | 55 - 60lm |
| Construction | PC / Steel | | | Steel | Aluminium |
| Approvals | CE | | | | |

www.lumo.eu.com

Lumo Lighting
Zodion House · Station Road · Sowerby Bridge
West Yorkshire · HX6 3AF · United Kingdom

Tel: +44 (0) 1422 317 333
Fax: +44 (0) 1422 836 717

A division of Zodion Ltd
Lumolighting